

# Getting started on the SAP Concur Community

Harness the most of what we have to offer!



**84,000+**  
Online Members

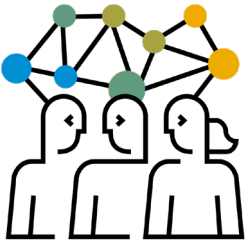


**550+** Resources for [Admins](#)  
& [End Users](#)



**12,000+** Posts in [Forums](#) &  
[Groups](#)

Invest in Community value. In the last year we've grown:



**48,960** New  
Users



**20,317**  
Forum Posts



**430** Articles  
Added



**7,604** Kudos  
Given



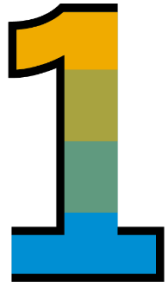
**1,019**  
Accepted



**4,995** New  
Admins

## Getting started in the Community is as easy as 1, 2, 3...

### Get Registered

A large, stylized number '1' with a thick black outline. The number is filled with a gradient of colors: yellow at the top, green in the middle, and blue at the bottom.

[Registering](#) or [signing in](#) for the SAP Concur Community has never been easier.

Be sure to use your company email (ideally the same email you use for your instance of your SAP Concur Solutions).

When selecting a Username, remember that this will be visible to other SAP Concur Customers – don't divulge any personal info beyond your name.

---

### Get Reading

A large, stylized number '2' with a thick black outline. The number is filled with a gradient of colors: yellow at the top, green in the middle, and blue at the bottom.

There's a wealth of knowledge waiting for you on Community. Whether you're an SAP Concur administrator looking for [Admin Resources](#), or an end user looking for [Support & FAQ](#), we've got what you need.

Don't forget to check out the [Forums](#). No matter your role in your organization, our Forums can help you at any stage of your SAP Concur journey.

---

### Get Involved

A large, stylized number '3' with a thick black outline. The number is filled with a gradient of colors: yellow at the top, green in the middle, and blue at the bottom.

For our SAP Concur Administrators, join the [Admin Group](#) to harness the full power of our Community and access peer knowledge.

End Users can interact with one another on the Forums, based off the product they're trying to learn more about.

## Needing more info on how to get started on the SAP Concur Community?

[How Do I Sign In?](#)

[How Do I Join a Group?](#)

---

[How Do I Create a Post?](#)

[How Do I Reply to a Post?](#)

---

[What is Private Messaging?](#)

[How Do I Reply to a Private Message?](#)

---

[Why Should I Register and Verify my Email for the Community?](#)

[What Is SAP Translation Hub?](#)